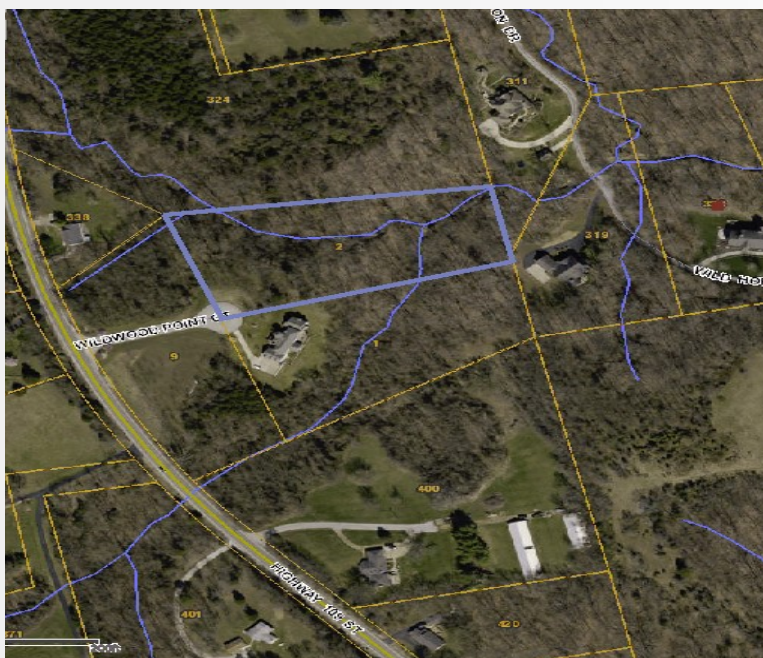


#2 Wildwood Point Ct. Wildwood, MO. 63005

Sale Price: \$229,000



Contact

Cathy Shaw-Connely
(636) 349-4960
Squawky1@aol.com

This lot is a 3.210+/- acre haven where you can build your dream home, with your builder. Location offers the peacefulness of the country and the conveniences of urban living, with the Chesterfield Valley being minutes away. Located on a private street within the Rockwood School District. Restrictions for minimum square footage is 2000 sq. ft. (Ranch) or 3200 sq. ft.(2-story). Topography lends itself to a walk-out style basement foundation configuration.

DIRECTIONS:

South on Hwy 109 from Wild Horse Creek Rd. To left on Wildwood Point Ct. Lot on Cul-de-Sac left of existing house.



17736 Edison Ave . Chesterfield, Missouri 63005

Office: (636) 532-1922 ♦ Fax: (636) 532-0222 ♦ info@shawrealtors.com ♦ www.shawrealtors.com