

2188 South Highway W, Unincorporated, MO 63347

SALE PRICE: \$241,605



Contact:

Tom Shaw Jr
(314)283-5064
TomShawJr55@gmail.com

Looking for an in town hunting location... this is it!!! Great lake site,
heavily wooded.

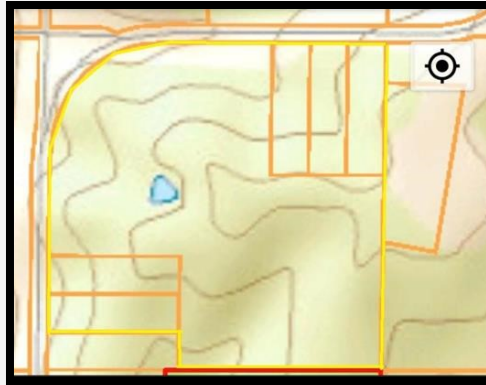
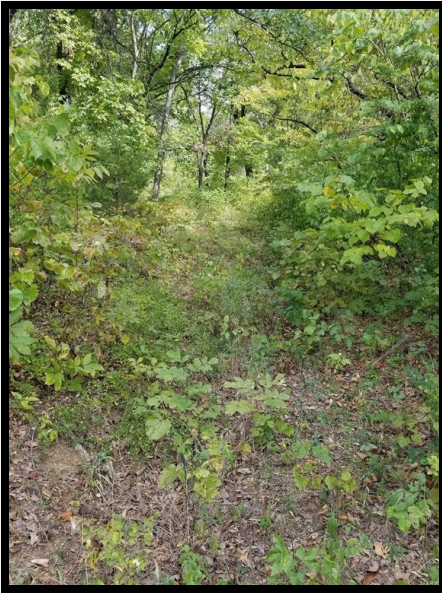
DIRECTIONS:

Hwy 47 to east of Troy to Hwy W north 2 mi see sign



17813 Edison Ave ◊ Suite 200 ◊ Chesterfield, Missouri 63005

Office: (636) 532-1922 ◊ Fax: (636) 532-0222 ◊ info@shawrealtors.com ◊ www.shawrealtors.com



Area Information / Property Description	
County	Lincoln
Subdivision	None
School District	Winfield R-IV
High School	Winfield High
Middle School	Winfield Middle
Elementary School	Winfield Elementary
Lot Size	37.17 ± Acres
Lot Description	Vacant Land, Wooded
Street Access	State Highway
Taxes	\$160
Associations Fees & Restrictions	None
Utilities	Water: None Electric: Yes Phone: None Sewer: None

The information contained herein has been supplied to us by the owner of this property or by a third party. Tom Shaw Realtors does not guarantee its accuracy and recommends buyers or tenant to verify all information herein and to obtain a full boundary survey before buying said home or property.
PRICES AND SPECIFICATIONS ARE SUBJECT TO CHANGE WITHOUT NOTICE