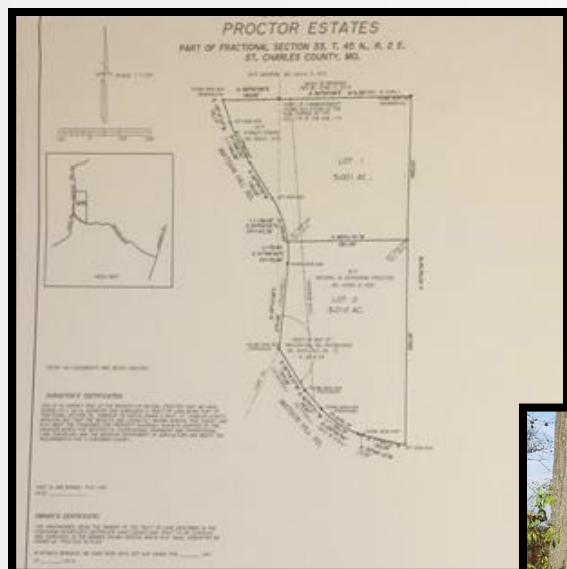


Matson Hill Road -Lot 2 Proctor Estates Defiance, MO 63341

SALE PRICE: \$115,000



Contact:

Tom Shaw Jr
(314)283-5064
TomShawJr55@gmail.com



Great views overlooking MO River Valley.
Wooded, Close to St. Charles County Parks on
Matson Hill Road. Washington School District.

DIRECTIONS:

HWY 94 West of Defiance to Matson Hill Road, Look for Sign.



17813 Edison Ave ◊ Suite 200 ◊ Chesterfield, Missouri 63005

Office: (636) 532-1922 ◊ Fax: (636) 532-0222 ◊ info@shawrealtors.com ◊ www.shawrealtors.com

Area Information / Property Description	
County	St Charles
Subdivision	None
School District	Washington
High School	Washington High School
Middle School	Washington Middle
Elementary School	Augusta Elementary
Lot Size	5.010 ± Acres
Lot Description	Wooded, Natural State
Street Access	Asphalt
Taxes	\$12 / 2016
Associations Fees & Restrictions	None
Utilities	Water: None Electric: Yes Phone: Yes Sewer: None

The information contained herein has been supplied to us by the owner of this property or by a third party. Tom Shaw Realtors does not guarantee its accuracy and recommends buyers or tenant to verify all information herein and to obtain a full boundary survey before buying said home or property.

PRICES AND SPECIFICATIONS ARE SUBJECT TO CHANGE WITHOUT NOTICE