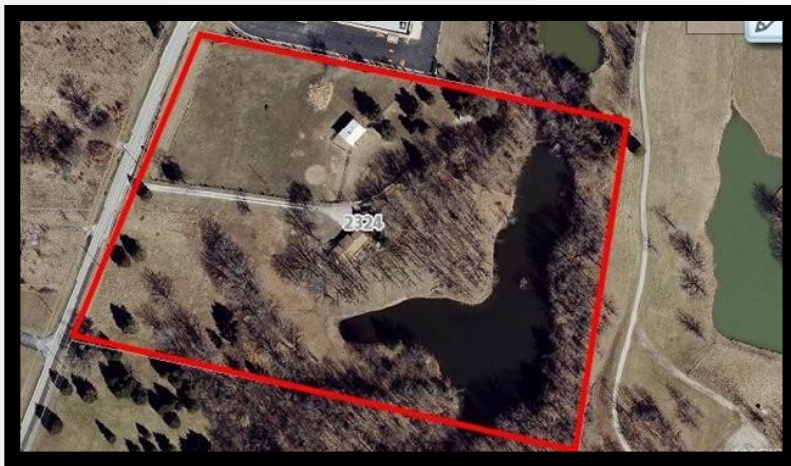


***2324 Highway Z
Unincorporated, MO. 63385
10.54+/- Acres***

SALE PRICE: \$1,300,000



Contact:

***Tom Shaw Jr.
(314)283-5064
TomShawJr55@gmail.com***

***Ideal for a church or private school. Hwy
N is growing fast, invest for further
commercial potential.***

DIRECTIONS:

*South on Hwy Z from Hwy 70 to Hwy N on the south side of
Walgreens, see sign.*



17813 Edison Ave. Suite 200 ♦ Chesterfield, Missouri 63005

Office: (636) 532-1922 ♦ Fax: (636) 532-0222 ♦ info@shawrealtors.com ♦ www.shawrealtors.com



Area Information / Property Description

County	St. Charles
Subdivision	Hanebery Subdivision
School District	Wentzville School District
High School	Timberland High School
Middle School	Wentzville Middle School
Elementary School	Boone Trail Elementary
Lot Size	10.54± Acres
Lot Description	Pasture, Scattered Timber
Street Access	Asphalt
Taxes	\$1,533 / 2017
Associations Fees & Restrictions	None
Utilities	Water: Public Electric: Yes Phone: Yes Sewer: Public



The information contained herein has been supplied to us by the owner of this property or by a third party. Tom Shaw Realtors does not guarantee its accuracy and recommends buyers or tenant to verify all information herein and to obtain a full boundary survey before buying said home or property.

PRICES AND SPECIFICATIONS ARE SUBJECT TO CHANGE WITHOUT NOTICE