

*11 Hwy 79  
St. Paul, MO. 63366  
34.6-acres*

***SALE PRICE: \$1,211,350***



**Contact:**

*Tom Shaw Jr.  
(314) 283-5064  
TomShawJr55@yahoo.com*

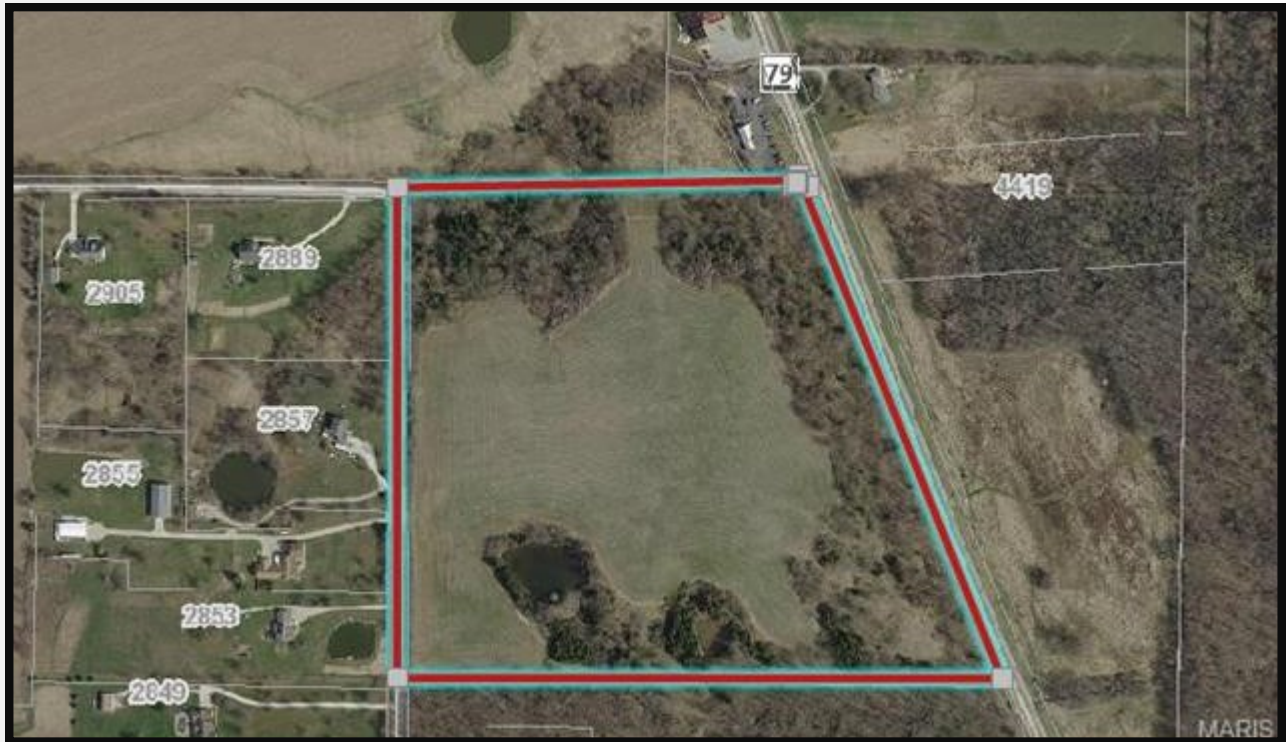
**Great for a family compound over looking the Missouri River Bluffs. Small builder for 5 acres lots.**

**DIRECTIONS:** *Hwy 79 north to Voellman Rd to Dyer. See sign.*



17813 Edison Ave ◊ Suite 200 ◊ Chesterfield, Missouri 63005

Office: (636) 532-1922 ◊ Fax: (636) 532-0222 ◊ info@shawrealtors.com ◊ www.shawrealtors.com



### Area Information / Property Description

<b>County</b>	St. Charles
<b>Subdivision</b>	None
<b>School District</b>	Ft. Zumwalt
<b>High School</b>	Ft. Zumwalt North High School
<b>Middle School</b>	Ft. Zumwalt North Middle School
<b>Elementary School</b>	Westhoff Elementary
<b>Lot Size</b>	34.6+/- acres
<b>Lot Description</b>	Crop, Gently Rolling, Scattered Timber, Sloping, Wooded
<b>Street Access</b>	Asphalt, County Road
<b>Buildings</b>	None
<b>Taxes</b>	TBD
<b>Associations Fees &amp; Restrictions</b>	None
<b>Utilities</b>	Water: None Electric: YES Phone: N/A Sewer: Other/None

The information contained herein has been supplied to us by the owner of this property or by a third party. Tom Shaw Realtors does not guarantee its accuracy and recommends buyers or tenant to verify all information herein and to obtain a full boundary survey before buying said home or property.  
**PRICES AND SPECIFICATIONS ARE SUBJECT TO CHANGE WITHOUT NOTICE**