

# 2512 Hopewell Road, Unincorporated, MO 63385

***SALE PRICE: \$186,000***



***Contact:***

***Tom Shaw Jr***  
***(314)283-5064***  
***TomShawJr55@gmail.com***

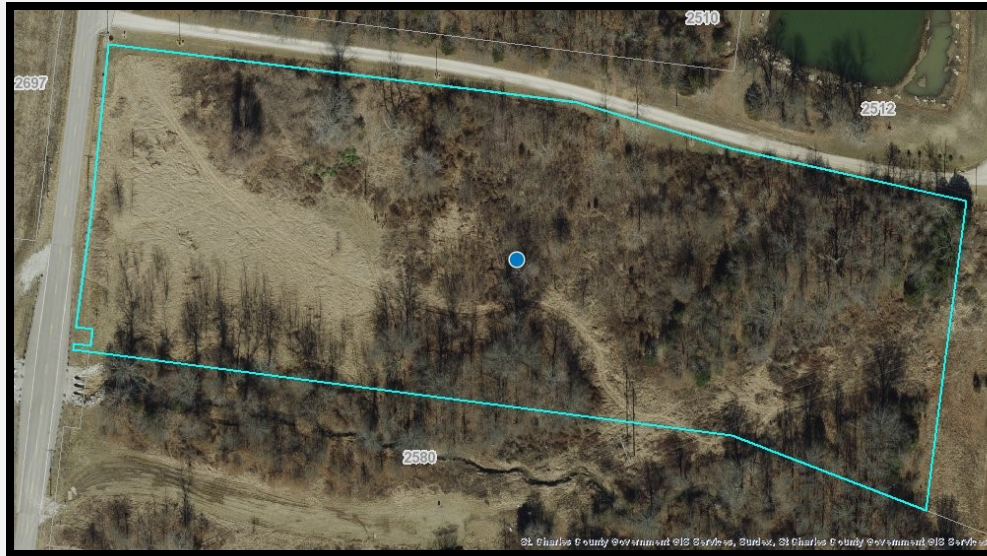
**GREAT STAND ALONE B TRACT GREAT FOR HORSES BUILD YOUR OWN  
SMALL MINI FARM SOME FLOOD PLAIN**

**DIRECTIONS:** HWY N WEST OF 64 HWY 2 MI SOUTH ON HOPEWELL 1MI TO  
SIGN



17813 Edison Ave ♦ Suite 200 ♦ Chesterfield, Missouri 63005

Office: (636) 532-1922 ♦ Fax: (636) 532-0222 ♦ [info@shawrealtors.com](mailto:info@shawrealtors.com) ♦ [www.shawrealtors.com](http://www.shawrealtors.com)



<b>Area Information / Property Description</b>	
<b>County</b>	St Charles
<b>Subdivision</b>	None
<b>School District</b>	Wentzville R-IV
<b>High School</b>	Timberland High
<b>Middle School</b>	Wentzville Middle
<b>Elementary School</b>	Duello Elementary
<b>Lot Size</b>	6.0014 ± Acres
<b>Lot Description</b>	Flood Plain, Gently rolling, Pasture
<b>Street Access</b>	County Road
<b>Taxes</b>	\$673
<b>Associations Fees &amp; Restrictions</b>	None
<b>Utilities</b>	Water: None Electric: Yes Phone: None Sewer: None

The information contained herein has been supplied to us by the owner of this property or by a third party. Tom Shaw Realtors does not guarantee its accuracy and recommends buyers or tenant to verify all information herein and to obtain a full boundary survey before buying said home or property.  
**PRICES AND SPECIFICATIONS ARE SUBJECT TO CHANGE WITHOUT NOTICE**