

3396 Highway 109 Glencoe, MO. 63038

SALE PRICE: \$26,500



Contact:

Cathy Shaw-Connely

(636) 346-4960

squawky1@aol.com

Ron Meier

(314)409-1521

TSR.Meier@gmail.com

6.55+/- Acres located in Wildwood, MO. on Hwy 109 across from intersection of Radcliffe Place Drive and Hwy 109. Property lays out like a pie with the largest piece being on Hwy 109 and both North & South sides coming to a point in the rear. The property is located within the flood plain.

DIRECTIONS:

From Manchester road head West, take exit onto Hwy 109 and follow round-a-bout to the left. Approximately 3 miles, lot on the left.



17813 Edison Ave. Suite 200 ♦ Chesterfield, Missouri 63005

Office: (636) 532-1922 ♦ Fax: (636) 532-0222 ♦ info@shawrealtors.com ♦ www.shawrealtors.com



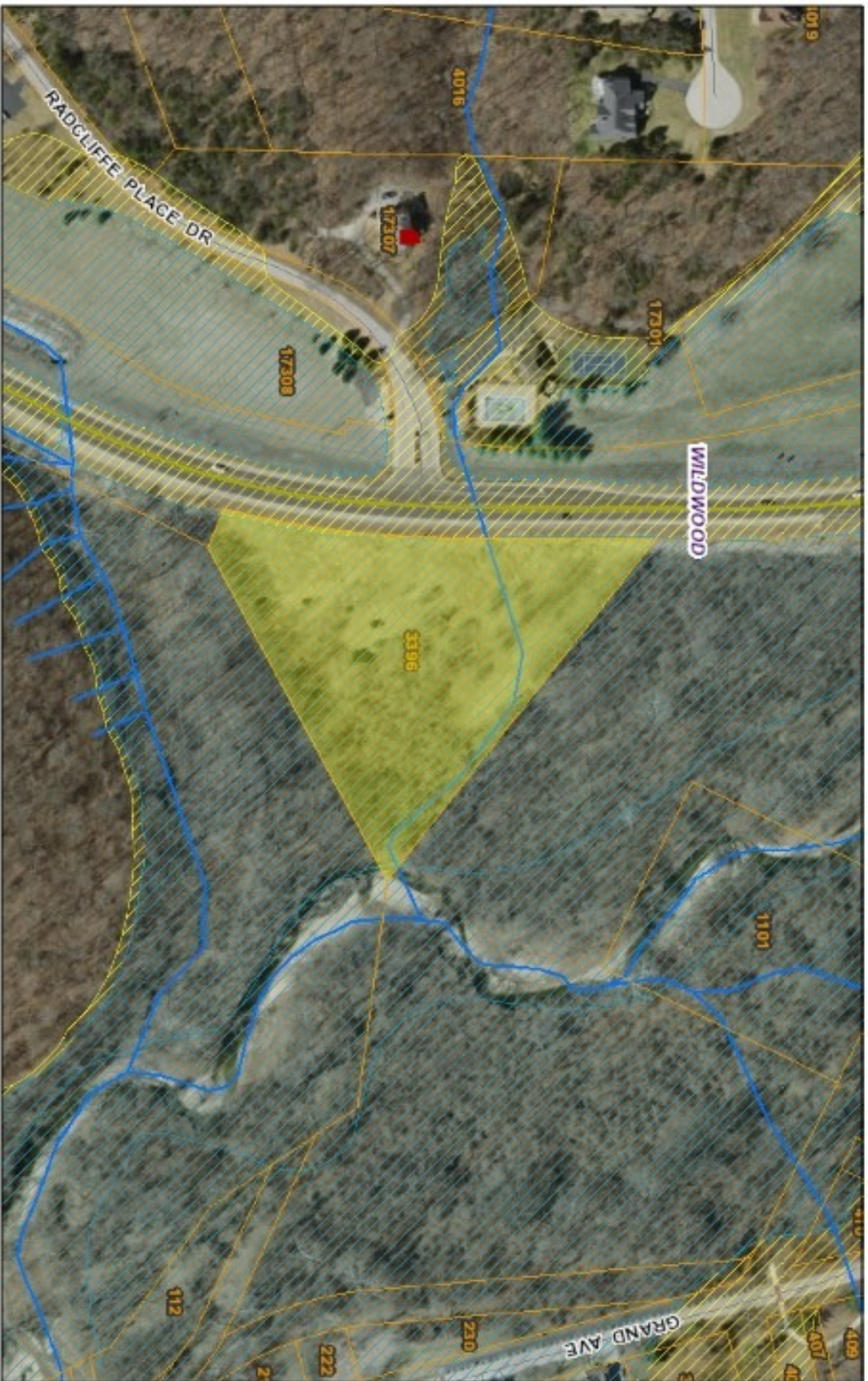
Area Information / Property Description

County	St. Louis
Subdivision	Survey 3206-44-3
School District	Rockwood
High School	Eureka Senior High
Middle School	Lasalle Springs Middle School
Elementary School	Blevins Elementary
Lot Size	6.55± Acres
Lot Description	Suitable for horses, wooded
Street Access	Paved
Taxes	\$347 2014
Associations Fees & Restrictions	None
Utilities	Water: None Electric: None Phone: None Sewer: None

The information contained herein has been supplied to us by the owner of this property or by a third party. Tom Shaw Realtors does not guarantee its accuracy and recommends buyers or tenant to verify all information herein and to obtain a full boundary survey before buying said home or property.

PRICES AND SPECIFICATIONS ARE SUBJECT TO CHANGE WITHOUT NOTICE

St. Louis County Parcel Map



October 26, 2015

Parcel Selected

Sales (Last 2 Years)

St. Louis County GIS Service Center



Created by: St. Louis County GIS Service Center
Copyright St. Louis County, all rights reserved