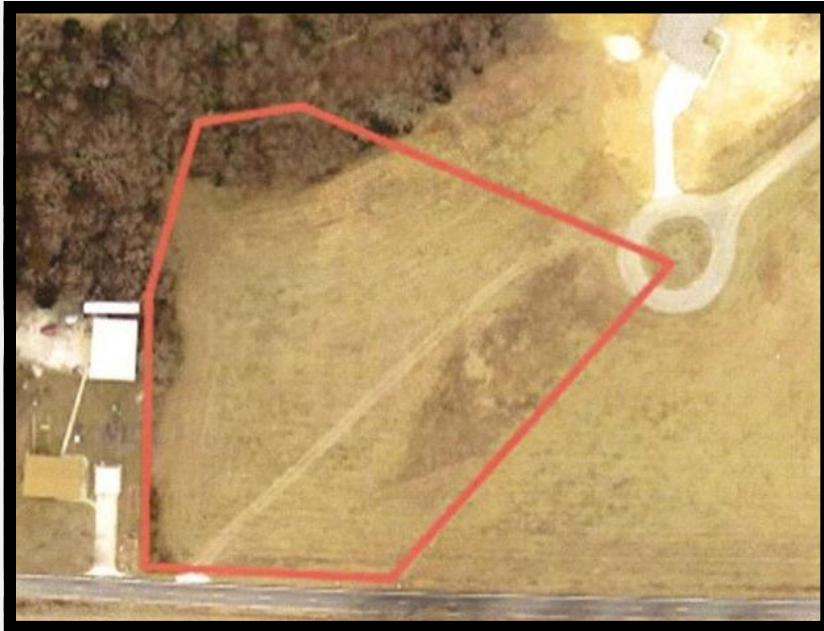


27226 Blattner Meadows Ct Unincorporated, MO. 63390

SALE PRICE: \$62,500



Contact
Randy Lewis
(636)384-7355
a1mapmkr@gmail.com

Looking for a residential lot? Then look no more! Only 1 Beautiful 3 acre lot available in this small community subdivision called Blattner Meadows. Lot 13 is open and would make a great walk-out basement. Side entry garage, 1800 sq. ft. minimum for ranches and 2000 sq. ft. minimum for two story models.

**MOTIVATED SELLER - GREAT PRICE - GREAT LOCATION -
BUILD YOUR DREAM HOME ON THIS LOT - DON'T MISS OUT!!**

DIRECTIONS:

At the intersection of South String Town Road, and Blattner Meadows Court, take Blattner Meadows Court to the end at the Cul-De-Sac



17813 Edison Ave ◊ Suite 200 ◊ Chesterfield, Missouri 63005

Office: (636) 532-1922 ◊ Fax: (636) 532-0222 ◊ info@shawrealtors.com ◊ www.shawrealtors.com

Area Information / Property Description

County	Warren
Subdivision	Blattner Meadows
School District	Wright City R-II
High School	Wright City High
Middle School	Wright City Middle
Elementary School	Wright City East/West Elementary
Lot Size	3.00+/- acres
Lot Description	Cul-De-Sac, Level Lot
Street Access	Paved, Private
Taxes	\$100 / 2017
Associations Fees & Restrictions	\$500 / Yearly
Utilities	Water: Shared Electric: Yes Phone: Yes Sewer: None

The information contained herein has been supplied to us by the owner of this property or by a third party. Tom Shaw Realtors does not guarantee its accuracy and recommends buyers or tenant to verify all information herein and to obtain a full boundary survey before buying said home or property.

PRICES AND SPECIFICATIONS ARE SUBJECT TO CHANGE WITHOUT NOTICE